

Overview of Kansas State Board of Nursing



Kansas State Board of Nursing

- The mission of the Board of Nursing is to assure the citizens of Kansas safe and competent practice by nurses and mental health technicians.



Board Members

- Board Member information is located on KSBN website:
 - <http://www.ksbn.org/bm.htm>



Committee & Board Meetings

- Meet quarterly
- Meeting dates are found on KSBN website
 - <http://www.ksbn.org/bmadates.htm>



Education Committee

- Membership
 - A minimum of three Board Members including at least two Education RNs and four non-Board members
 - Representing the four types of education programs:
 - LPN
 - ADN
 - BSN
 - ARNP



Education Committee

- Purpose

- To review and recommend revisions in educational statutes and regulations for nursing, ARNP, RNA and LMHT programs
- To review educational policies for nursing and LMHT programs
- To review all reports, evaluations, and site visits of schools of nursing, ARNP, RNA and LMHT programs



Education Committee

- Responsible to do the following:
 - Approves Programs which prepare licensees
 - Makes on-site visits to schools of nursing
 - Reviews educational policies for all basic programs
 - Reviews and recommends approval of petitions to retake licensure examinations
 - Reviews and recommends approval of curriculum requests

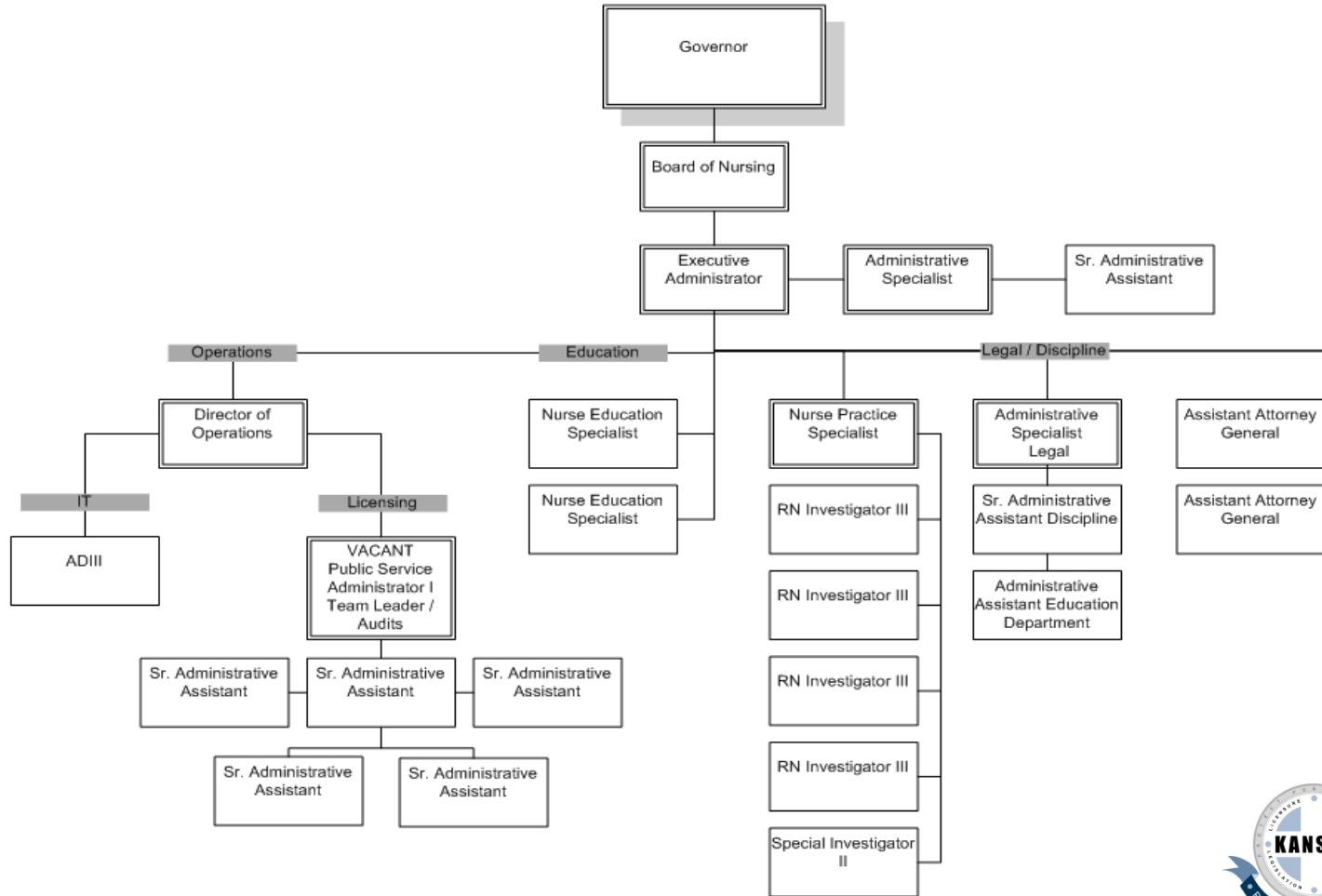


Committee & Board Meetings

- Agendas, minutes, and upcoming meeting packets are found on KSBN website:
 - <http://www.ksbn.org/boardmeetings.htm>



KSBN Org Chart



Contacts at KSBN

- NCLEX Examination Questions:
 - Nickie Stallons 785-296-2967 or nickie.stallons@ksbn.state.ks.us
- Legal/Practice Questions:
 - Diane Glynn, JD, RN 785-296-8401 or diane.glynn@ksbn.state.ks.us
- Nursing Program Questions:
 - Carol Moreland, MSN, RN 785-296-5036 or carol.moreland@ksbn.state.ks.us



Contacts at KSBN

- Disciplinary Action Questions:
 - Kathi Chalkley, LPN 785-296-8401 or kathleen.chalkley@ksbn.state.ks.us
- Student Fingerprinting Questions:
 - Karen Smith 785-296-3375 or karen.smith@ksbn.state.ks.us
- Executive Administrator Questions:
 - Mary Blubaugh, MSN, RN 785-296-5752 or mary.blubaugh@ksbn.state.ks.us

