

**Report
of the
Council for Nursing
ACADEMIC PROGRESSION
in Kansas
(C-NAK)
STATEWIDE ACADEMIC PROGRESSION
Resources
September 2017**

***ACADEMIC PROGRESSION IN NURSING (APIN)
ARTICULATION
and
LIFELONG LEARNING***

MISSION

The mission of the Council for Nursing Academic Progression in Kansas (CNAK) is to promote educational advancement for nurses in the state of Kansas by establishing a statewide academic progression resource.

PURPOSE

The purpose of this collaborative council known as CNAK is to promote educational advancement for nurses in Kansas by sustaining a document that outlines statewide academic progression models and resources currently utilized in Kansas nursing education programs.

ASSUMPTIONS

1. Educational advancement is essential to meet the needs of the evolving healthcare system.
2. Academic Progression is a process through which nursing programs cooperate to facilitate seamless* educational advancement for Kansas nursing graduates.
3. Pre-licensure programs in practical, associate, and baccalaureate degree nursing must meet standards determined by the Kansas State Board of Nursing (KSBN).
4. Each educational institution establishes its own mission, goals, standards, and policies.
5. There is a common core of knowledge, attitudes, and cognitive and psychomotor skills that graduates of all types of nursing programs should possess; there are distinct differences in the breadth, depth, scope of preparation, and knowledge of each type of graduate.
6. This resource may assist some nursing graduates who have the desire and ability to progress to the next level(s) of nursing education.
7. Nurses seeking to advance their professional education deal with the multiple realities of educational requirements, family and personal responsibilities, job-related demands, financial concerns, and geographic considerations.
8. There are many different models or pathways that allow nurses to pursue educational advancement.
9. Nursing programs/colleges continue to develop new models and pathways for educational advancement.

*Concept emphasized in the IOM report.

Institute of Medicine (IOM). (2011). *The future of nursing: Leading change, advancing health*. Washington, DC.: The National Academies Press.

KANSAS STATEWIDE NURSING ACADEMIC PROGRESSION RESOURCE

This Kansas Statewide Nursing Academic Progression Resource and accompanying algorithm has been developed by the Council on Nursing Academic Progression in Kansas to guide the educational efforts of individuals desiring to become a member of the nursing profession in Kansas. Its purpose is to provide a roadmap of the course selections needed to progress from beginning entry level through the Bachelors of Science in Nursing (BSN) degree and beyond (*see attached Algorithm of Nursing Degree Academic Progression Pathways in Kansas*).

Licensed Practical Nurse (LPN):

The LPN is the entry point for many people into the nursing profession.

The LPN is a title conferred after passing the NCLEX-PN Exam. To be eligible for this exam an individual must graduate from a nursing program approved by the Kansas State Board of Nursing. For a current listing of these programs see <http://www.ksbn.org/>

Educational Preparation:

Pre-requisites: These need to be consistent with the Baccalaureate Degree pre-requisites.

Nursing Courses: These are designed to prepare the graduate for a role in health care delivery as an LPN.

Registered Nurse (RN)

Associate Degree in Nursing (ADN)-Degree is an Associates of Applied Science (AAS) or Associates of Science (AS).

The ADN-RN is an initial entry point for many people. This degree can also be obtained through a program that combines LPN education with ADN education. The RN title is conferred after passing the NCLEX-RN exam. To be eligible for this exam an individual must graduate from a nursing program approved by the Kansas State Board of Nursing. For a current listing of these programs see <http://www.ksbn.org/>

Educational Preparation:

Associate Degree Pre-requisites: Courses chosen for the Associate degree pre-requisites should be consistent with those needed to advance to the BSN degree.

Nursing Courses: These are designed to prepare the graduate for a role in health care delivery as an RN.

Bachelors of Science Degree in Nursing (BSN)

The BSN-RN is an initial entry point for many people. This degree can also be obtained through a program that combines ADN education with BSN education. The RN title is conferred after passing the NCLEX-RN exam. To be eligible for this exam an individual must graduate from a nursing program approved by the Kansas State Board of Nursing. For a current listing of pre-licensure nursing programs see <http://www.ksbn.org/>.

Bachelor Degree Common Foundational Courses

Four Categories (APIN – Final Report, 2014)

<u>General Education (24 credits +/-)</u> Communications English Humanities Fine Arts Mathematics History Statistics	<u>Basic Sciences (12 credits +/-)</u> Chemistry Biology Microbiology
<u>Social Sciences (9 credits +/-)</u> Psychology Growth and Development (Lifespan) Sociology	<u>Human Sciences (16 Credits +/-)</u> Anatomy and Physiology Pathophysiology Nutrition Pharmacology

These courses may be considered pre-requisites but ultimately are courses required as foundational for the BSN degree. This group of courses should routinely total between 60-62 credit hours.

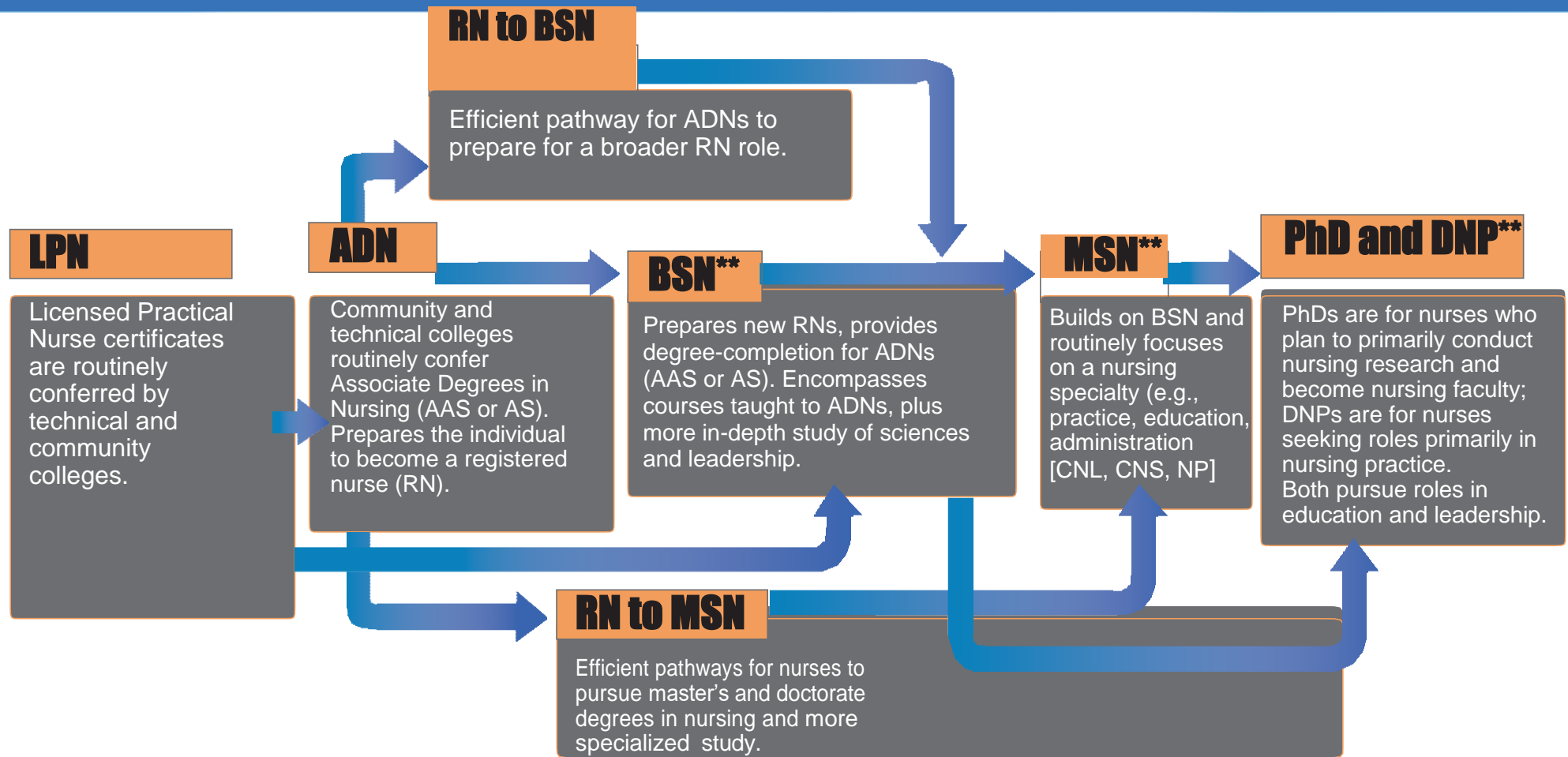
Nursing Courses:

These are designed to prepare the graduate for a role in health care delivery as an RN.

Other considerations for all nursing pathways of academic progression:

1. Must meet program admission requirements.
2. A valid, current nursing license might be required.
3. May validate previous nursing and non-nursing courses through testing, escrow, or portfolio might be validated.
4. Transfer of nursing and non-nursing courses (in-state or out of state) will be subject to acceptance by college or university policy. Timelines for completion of foundational courses must be coordinated with each nursing program.

Algorithm of Nursing Degree Academic Progression Pathways in Kansas



LPN- Licensed Practical Nurse ADN- Associate Degree Nursing: AAS- Associate Applied Science: AS- Associate Science BSN- Bachelor Science Nursing
 MSN- Master Science in Nursing CNS- Clinical Nurse Specialist CNL- Clinical Nurse Leader NP- Nurse Practitioner PhD- Doctor of Philosophy in Nursing
 DNP- Doctor Nursing Practice ** *Routinely degree conferred at a college or university*

KANSAS NURSING PROGRAM INFORMATION

Nursing Programs in Kansas

Degree options available at Kansas nursing programs and admission criteria evolve quickly. Please access current information about Kansas nursing programs from the following links/websites: Kansas State Board of Nursing, Accreditation Commission for Education in Nursing (ACEN), Commission on Collegiate Nursing Education (CCNE), and Kansas Organization of Nurse Leaders (KONL).

KANSAS UNDERGRADUATE PROGRAMS

<https://ksbn.kansas.gov/wp-content/uploads/Education/nursingschoolst.pdf>

KANSAS GRADUATE PROGRAMS

<https://ksbn.kansas.gov/wp-content/uploads/Education/Graduate-Approved-Kansas-Nursing-Schools.pdf>

KANSAS ACCREDITED NURSING PROGRAMS

<http://www.acenursing.us/accreditedprograms/programsearch.asp>

<https://directory.ccnecommunity.org/reports/rptAccreditedPrograms-New.asp?state=KS&sFullName=Kansas>

ALL KANSAS NURSING PROGRAMS

<http://konl.org/Resources/KansasSchoolofNursing/>

Kansas Board of Regents (KBOR) Program Alignments Practical Nursing and Associate Degree Nursing Program Alignments

Information on the course alignment requirements for the Practical Nursing Programs in Kansas may be found at:

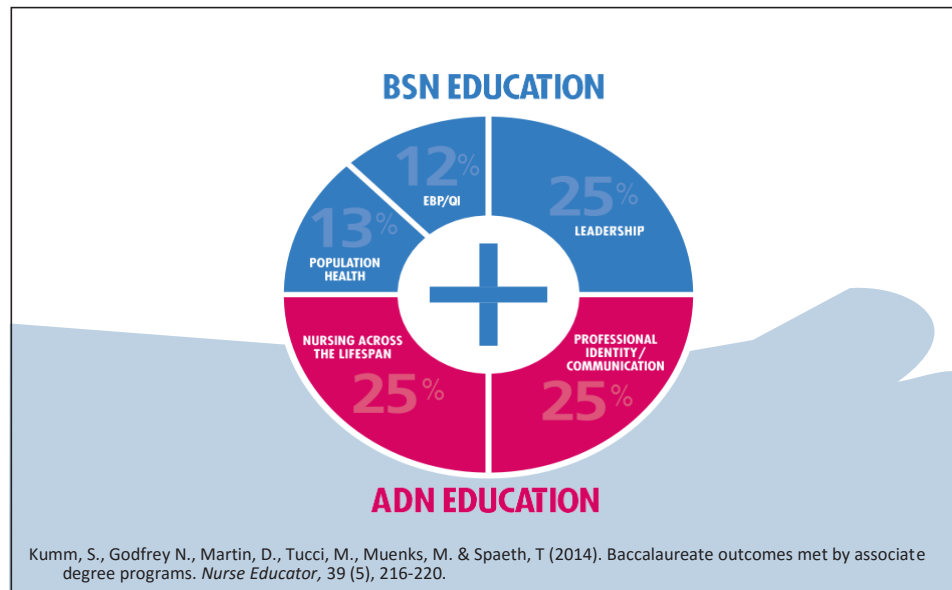
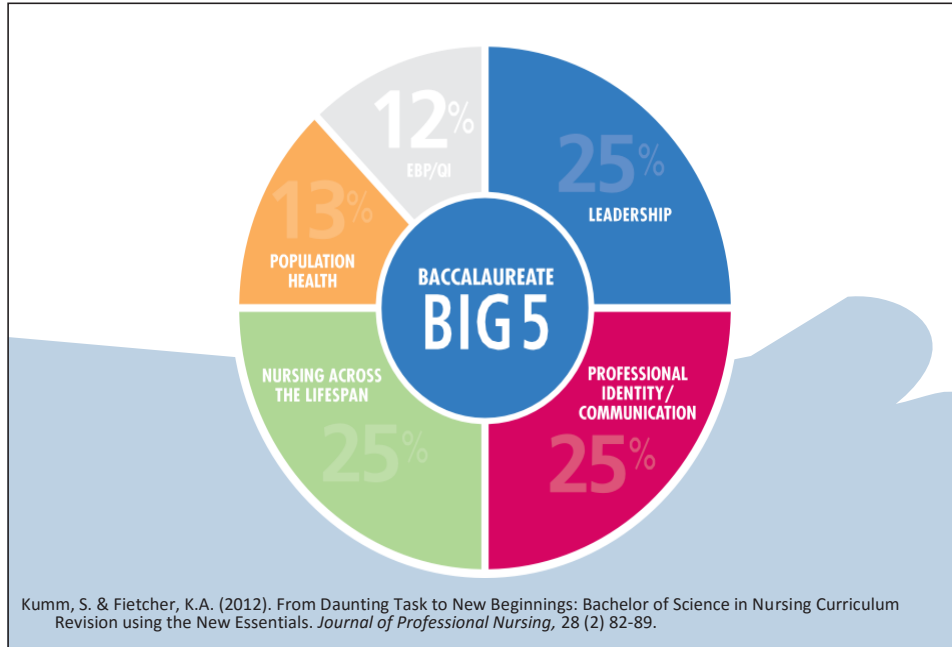
https://kansasregents.org/resources/PDF/Program_Alignment/ADN_Alignment_Map_2017.pdf

Information on the course alignment requirements for the Associate Degree Nurse Programs in Kansas may be found at:

https://www.kansasregents.org/workforce_development/program_alignment/associate_degree_nurse

Partnership Model

In 2013, a grass-roots, collaborative partnership between accredited Kansas community college nursing programs and the University of Kansas School of Nursing began. Below find information related to the current nursing partnership model in Kansas. For detailed information please contact a Kansas accredited community college or visit (<http://nursing.kumc.edu/partnership.html>).



Community College/BSN Example Curriculum X

Fall 1	Hrs	Spring 1	Hrs
PSYC0101 Intro to Psych **MATH0104 Inter. College Algebra BIOL0141 Human Anatomy (includes lab) ENGL0101 Comp I XXXXXXXXX Humanities Elective **Only if not eligible for College Algebra	3 3 4 3 3 16	BIOL0271 Physiology BIOL0272 Physiology Lab ENGL0102 Comp II PSYC0203 Human Development or PSYC0202 Child Development SPCH0153 Inter. Communication or SPCH0151 Public Speaking	3 1 3 3 3 <u>3</u> 13
Fall 2		Spring 2	
BIOL0261 Microbiology BIOL0262 Microbiology Lab MATH0105 College Algebra BIOL0145 Nutrition SOSC0107 Sociology	3 2 3 3 <u>3</u> 14	CHEM0109 Chemistry MATH0115 Statistics XXXXXXXXX Global Perspective Course XXXXXXXXX Liberal Arts Elective	5 3 3 <u>3</u> 14
Summer 2			
NURS0193 Health Assessment	<u>3</u> 3		
Fall 3		Spring 3	
NURS0131 Nursing Interventions NURS0132 Foundation Concepts NURS 356 Using Technology and Informatics to Improve Patient Safety NURS 357 Introduction to the Baccalaureate Nurse Role	3 4 3 3 13	NURS0133 Homeostatic Concepts NURS0134 Protective Concepts NURS0135 Pathophysiology* NURS 411 Population Health NURS 412 Nursing in Health Care Microsystems	4 4 3 3 <u>3</u> 17
Summer 3			
NURS 413 Teamwork and Collaboration in Healthcare NURS 415 Improving Healthcare Quality	3 <u>3</u> 6		
Fall 4		Spring 4	
NURS0251 Lifespan Family & Community NURS0208 Pharmacology* NURS 414 Organizational Influences on Nursing Practice NURS 416 Evidence Based Nursing Practice	6 3 3 <u>3</u> 15	NURS0254 Complex Health Care NURS0255 Management Concepts NURS 417 Influences of the Health Care Macrosystem on Nursing Practice NURS 418 Senior Project	4 4 3 <u>3</u> 14

ADN/CCC: Black = Pre-requisite courses Gen Ed: 34 hrs Nursing : 38 hrs (*BSN Elective Nursing Courses = 6 hrs)

BSN: Black Bold = Pre-requisite courses Gen Ed: 23 hrs Nursing: 30 hrs

	ADN/CCC	BSN courses above ADN	BSN/ADN
TOTAL NURSING HOURS REQUIRED	38	30	30
General Education	34	23	57
Prior Learning Assessment Credit for ADN Courses			32
Lower level Elective Nursing (Patho and Pharm)			6
TOTAL HOURS REQUIRED FOR DEGREE	72	53	125

Nursing Organizations in Kansas

<http://konl.org/Resources/ResourcesDownloads/d136440.aspx?type=view>

ORGANIZATIONS IN KANSAS FOR NURSING PRACTICE AND EDUCATION

KSBN - Kansas State Board of Nursing
(Governor of Kansas & Legislation)

KONL - Kansas Organization of Nurse Leaders

KNEP - Kansas Commission for Education and Practice

KSAC - Kansas Action Coalition

KACN - Kansas Association of Colleges of Nursing

KCADNE - Kansas Council of Associate Degree Educators

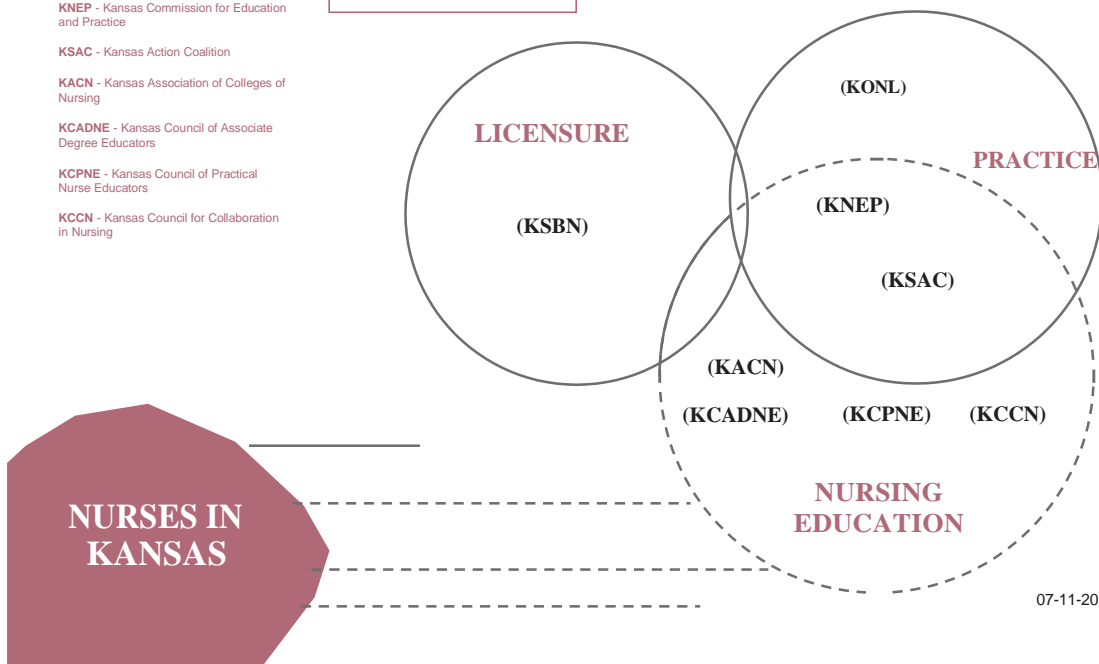
KCPNE - Kansas Council of Practical Nurse Educators

KCCN - Kansas Council for Collaboration in Nursing

LEGEND:

--- : Informal Relationship
 ——— : Direct Relationship
 Goal: keep every circle linked together

PROFESSIONAL ORGANIZATIONS



07-11-2016

GLOSSARY OF TERMS

1+1 Nursing Programs

Programs which are a combination of a first level of practical nursing and second level of associate degree nursing curriculum. Programs are separate, and require two applications and acceptances. All graduates of the practical nursing first level take NCLEX-PN.

Advisor

An expert who gives advice; "an advisor helps students select their courses related to career pathways."

Academic Progression

Advancing nursing education by reiterating support of multiple entry points as a way to promote diversity of the nursing workforce, provide increased access to nursing, and contain the cost of educating health care professionals. Seamless academic progression- To provide pathways where students are not required to take additional prerequisites, where courses build on competencies students have already achieved, and where agreements between schools of nursing provide courses that are accessible and flexible and allow for uninterrupted, individualized learning (NLN, 2011).

Accreditation

A voluntary, non-governmental process that uses peer review to determine if academic programs meet public confidence. Institutional accreditation evaluates the entire institution as a whole. Specialized accreditation evaluates a particular education unit or program(s) within a governing organization. A measure of quality of a nursing program (ACEN, 2016).

Articulation

The process by which nursing programs cooperate to facilitate educational progress of graduates from one program/level to the next with minimal loss of academic credit or duplication of learning experiences.

Approval or Approved Nursing Programs

Nursing programs approved by the Kansas State Board of Nursing (KSBN)

Bi-Level Nursing Programs

A designation used in Kansas to describe ADN programs which have either an optional or required step between the first and second levels for NCLEX-PN. The two levels teach RN curriculum, and there is only one application and acceptance for both levels.

Community College

A 2-year government-supported college that offers an associate degree.

Client

A recipient of nursing care.

Delegate, delegates, delegated

As defined in the Kansas Nurse Practice Act (<https://ksbn.kansas.gov/npa/>)

Educational Advancement

The process used to facilitate lifelong learning that includes basic education, academic progression, and continuing competencies. (IOM, 2011)

Escrow

Nursing credits held in trust to be posted to transcript per program policy.

Foundational Courses

Common content courses that contribute to the BSN degree. These courses may be called for example pre-requisite courses, general education courses, liberal studies, or support courses. The Academic Progression in Nursing (APIN) buckets (APIN, 2011).

Graduate Degree

A master's degree or doctoral degree

Opt Out Course

Term used to describe an option in bi-level programs to exit after the first level of curriculum and test for NCLEX-PN. The course typically incorporates any content not covered in the first level, but needed to prepare a PN for practice.

Pre-requisites

Courses required or necessary prior to the start of a nursing program. Something that is necessary to an end or to the carrying out of a function.

Portfolio

Documentation of nursing experience/knowledge/competency to support receiving academic credit.

Structured Setting

A site or situation in which nursing care is provided based on specific protocols and available resources.

Therapeutic

Goal-directed nursing interventions(s).

Transition Course

A course designed to prepare a student to enter the next level of credential or licensure. Often used in PN to ADN, or RN to BSN entry level students.

Undergraduate Degree

A bachelor's or four-year degree.

Validation

A benchmark/standard to confirm nursing knowledge/competency.

References and Resources

Academic Progression in Nursing (APIN). (2014). <http://www.aone.org/initiatives/apin.shtml>

Accreditation Commission for Education in Nursing Glossary (ACEN, 2016;2017)

Campaign for Action. (2014).

<http://www.academicprogression.org/resources/docs/Foundational-BSN-Courses-List.pdf>

Giddens, J., & Meyer, D. (2016). Foundational courses for the Baccalaureate nursing degree: Enhancing efficiency for academic progression. *Journal of Nursing Education* 55(7), 373-378.

Institute of Medicine (IOM). (2011). *The future of nursing: Leading change, advancing health*. Washington, D.C.: The National Academies Press.

Kumm, S. & Fletcher, K.A. (2012). From daunting task to new beginnings: Bachelor of science in nursing curriculum revision using the New Essentials. *Journal of Professional Nursing*, 28(2), 82-89.

Kumm, S., Godfrey, N., Martin, D., Tucci, M., Muenks, M., & Spaeth, T. (2014). Baccalaureate outcomes met by associate degree programs. *Nurse Educator*, 39(5), 216-220.

McMilliam (2016). *Webster's new world: Compact desk dictionary*. New York, NY.:McMilliam
General Reference

Why Nursing- Resources

www.discovernursing.com/getting-started

www.discovernursing.com/specialty/starting-out

Historical Information, committee members, and past documents are available by contacting the Department of Nursing at Emporia State University.

(final 2.15.2018)